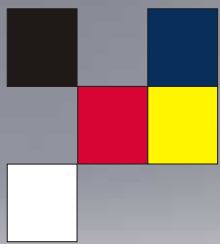
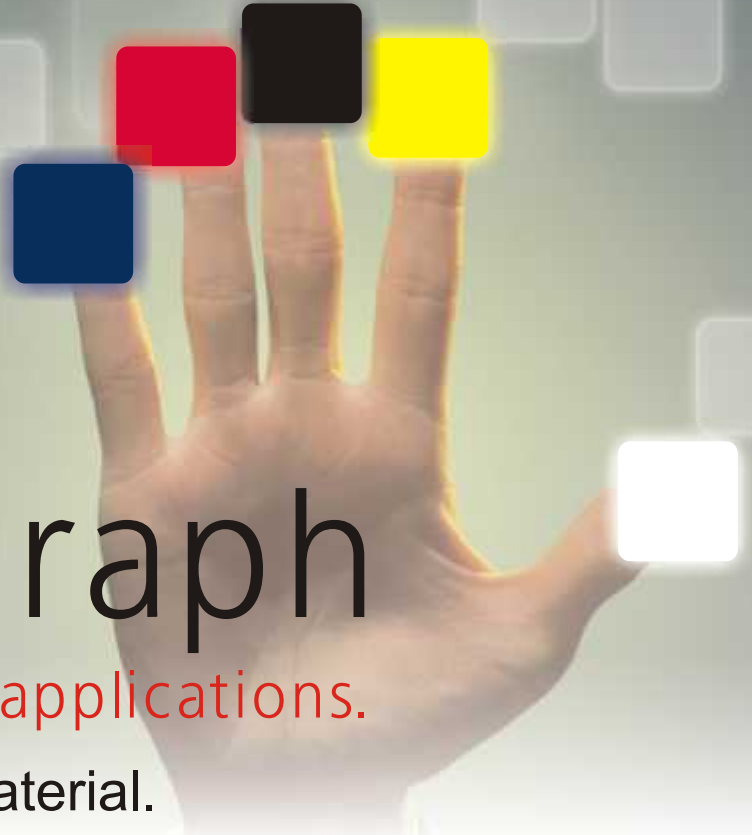


The future is now.



multigraph

one material. all applications.

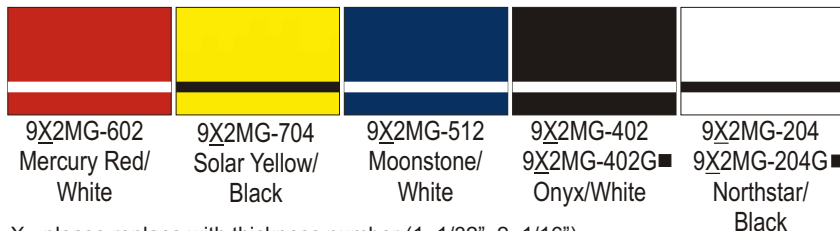
The next generation of sheet material.

It's not often you can *touch* the future.

Available in a range of standard colours, Multigraph is perfect for interior and exterior signage, personal identification, directional and institutional signage and industrial tagging. Its matte finish is ADA compliant, extremely outdoor weatherable, and highly resistant to marring and scratching. And it lasers like a dream.

With unprecedented durability and unmatched versatility, Multigraph isn't just evolutionary...it's *revolutionary!*

One material. All applications. The future is now.

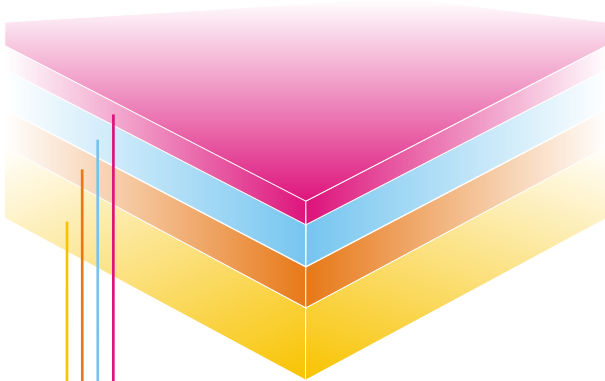


X - please replace with thickness number (1=1/32", 2=1/16")

Key Product Features

- excellent surface durability
- laser & rotary engravable
- outdoor weatherable & UV-stable
- extensive design possibilities
- smooth, effortless lasering at low power and high speeds
- great for laser vector cutting
- fine detail engraving
- photo lasering
- high impact strength

Multi-Layer Sheet Construction



1. Polymer liquid colour layer, contrast layer, UV-stabilized
2. Laser layer, UV-stabilized
3. Coloured layer, UV-stabilized & high impact modified
4. Blend layer, high impact modified acrylic

Applications

- exterior signs
- interior signs
- personal identification
- identification plates
- directory signs
- ADA signs
- plus more

Range of Markets

- architects and designers
- industrial/manufacturing
- institutional; schools, hospitals and daycare
- awards and recognition
- government
- advertising industry

Rowmark®
Great people. Great plastic.

Product Specifications

 **multigraph**
one material. all applications.



Material	Multi-layer high impact acrylic
Finish	Matte non-glare ■ Gloss
Sheet Size	24" x 48" (610 x 1219mm)
Thickness 2-ply	1/32" (0.8mm) Use 912MG as digits of item code. 1/16" (0.8mm) Use 922MG as digits of item code. (Gauges are approximate.)
Engraving Method	Laser Router Rotating carbide
Cutting Depth	.003" (.08mm)
Usage	Interior signage, Exterior signage, ADA compliant (matte only), Personal identification, Industrial tags

